



KEOR LP BATTERY BANK 1, 2, 3 kVA

Index

1	Introduction	12
2	Condition of use	12
3	Rear Panel	15
4	Installation	16
5	Technical features	18

1 Introduction

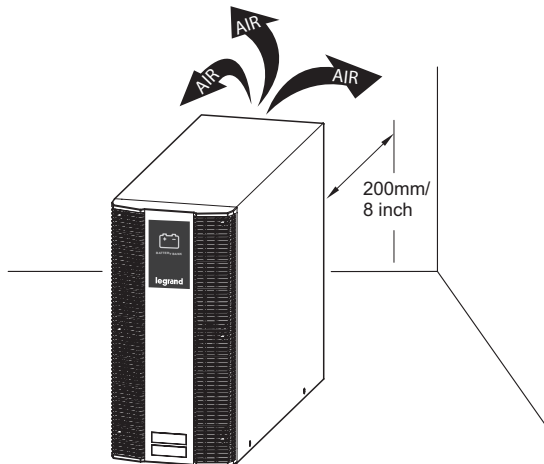
This manual contains information for users of the Keor LP battery banks designed for the Keor LP 1,2,3 kVA UPS models.

You are advised to read carefully this handbook and the safety instruction sheet included in the packaging before installing your uninterruptible power supply, meticulously following the instructions given herein.

In case of problems with the UPS, please read this manual before contacting technical support; Please download the latest version of the manual from the web site www.ups.legrand.com.

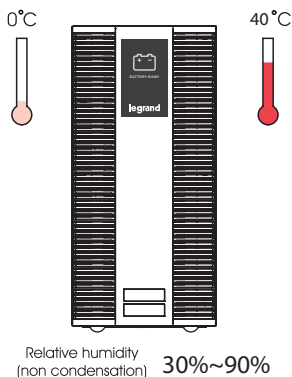
2 Condition of use

- The battery bank is supplied with a factory input plug and can be safely connected to the wall receptacle by the user.
- This battery bank is connected to an UPS. There will be voltage at the output terminals if the UPS is turned on even if the input AC Mains is not available.
- Make sure that the AC Utility outlet is correctly grounded.
- Do not try to repair the unit by yourself, contact your local supplier or your warranty will be void.
- Use a certified input power cable with the correct plugs and sockets for the appropriate voltage system.
- To eliminate any overheating of the battery bank, keep all ventilation openings free from obstruction and do not place any foreign objects on top of the battery bank. Keep the battery bank 20 cm away from the wall.



KEOR LP BATTERY BANK 1, 2, 3 kVA

- Make sure the battery bank is installed within the proper environment as specified. (0-40°C and 30-90% non-condensing humidity)



- Do not install the battery bank under direct sunlight. Your warranty will be void if the batteries fail due to overheating.
- This battery bank is designed for indoor use only.
- This battery bank is not designed for use in dusty, corrosive and salty environment .
- The warranty for this battery bank will be void if water or other liquid is spilt or poured directly onto the battery bank. Similarly we do not warrant any damage to the battery bank if foreign objects are deliberately or accidentally inserted into the battery bank enclosure.
- The battery will discharge naturally if the system is unused for a period of time.
- It should be recharged every 2-3 months if unused. During normal operation, the batteries will be automatically remained in charged condition.
- When Replacing Batteries, Replace With the Same Quantity, Type & Capacity.



CAUTION

Servicing of Batteries Should be Performed or Supervised by Trained Personnel with Knowledge of Batteries and the Required Precautions



CAUTION

Do Not Dispose of Battery or Batteries in an open fire. The Battery May Explode.



CAUTION

Do not open or mutilate the batteries. The electrolyte from the batteries is toxic and harmful to the skin and eyes.

**CAUTION**

Risk of Electric Shock the Battery Circuit is not isolated from AC, hazardous Voltage may exist between battery terminals and ground. Test before touching with bare hands.

**CAUTION**

A Battery can present a Risk of Electrical Shock and High Short Circuit Current. The Following Precaution Should be Observed When Working on Batteries:

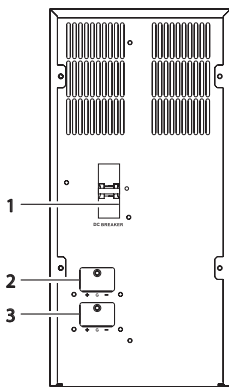
- A. Remove watches, rings, or other metal objects.
- B. Use tools with insulated handles.
- C. Wear rubber gloves and boots.
- D. Do not lay tools or metal parts on top of batteries.
- E. Disconnect charging source prior to connecting or disconnecting battery terminals.

Storage Instruction

For extended storage through moderate climate(-15 to +30 °C / +5 to +86 °F), the batteries should be charged for 12 hours every 6 months by plugging the UPS power cord into the wall receptacle. Repeat this every 3 months under high temperature (+30 to +45 °C / +86 to +113 °F) environment.

KEOR LP BATTERY BANK 1, 2, 3 kVA

3 Rear Panel



EN



1. DC Breaker	<ol style="list-style-type: none">1. Battery Over-current Protection Breaker2. To easy swappable battery, please put the position of the breaker in "O" position. In case there is 2nd(or next) battery bank connected with the battery bank, the DC voltage from the UPS Bat.+/- will flow through without any interruption to the 2nd Battery Bank.
2. UPS BAT. +/-	To the UPS DC Connected
3. EXT.BAT. +/-	To the DC connected of the 2nd(or next) battery bank connected.

Note: The packing condition and the external outlook of the unit should be inspected carefully before installation. Retain the packing material for future use.

Unpacking

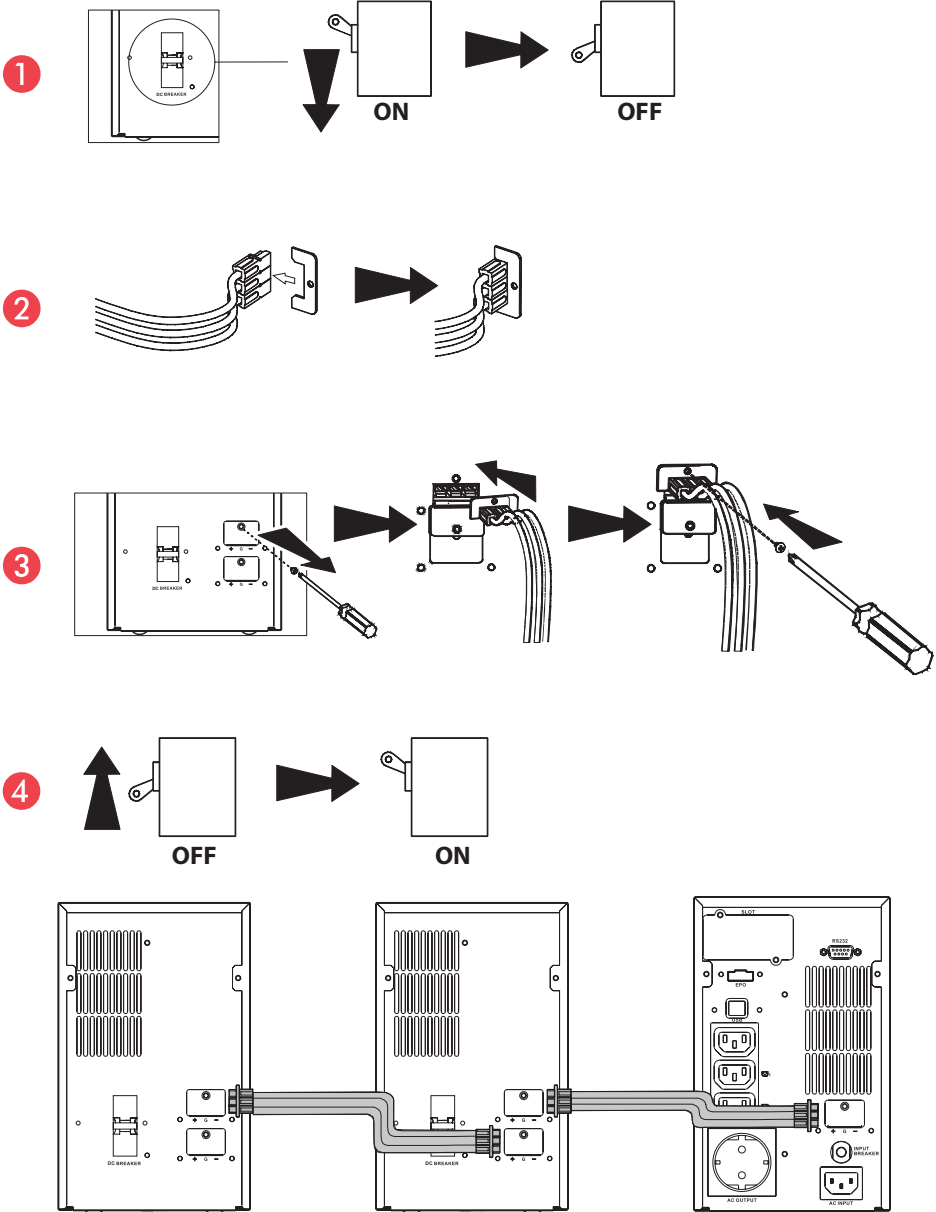
1. Take the battery bank out of the PE foam.
2. Remove the packing materials.

Note: The battery bank module is approx. 39kg, be cautious when unpacking and lifting the unit to avoid injury.
3. Standard Package includes:
 - a. DC connect cable
 - b. User's Manual
4. Accessories for Tower Mount

UPS	Connection
AS 3000 230V AS 2000 230V AS 1000 230V	 1pcs  2pcs

KEOR LP BATTERY BANK 1, 2, 3 kVA

Installation Instructions



5 Technical features

UPS	1000VA	2000VA	3000VA
Battery Bank PN	310598	310599	310600
Nominal System Voltage	24VDC	48VDC	72VDC
Battery Quantity	12	12	12
Battery Type	7Ah	7Ah	7Ah
Connector color	Red (+), Black (-), Green(Gnd)		
Dimensions, W x D x H, in (mm)			
Unit	322 x 151 x 444		
Weight (kg)			
Unit	39		

Recycling the Used battery



Contact your local recycling or hazardous waste center for information on proper disposal of the used battery.

LEGRAND
Pro and Consumer Service
BP 30076 - 87002
LIMOGES CEDEX FRANCE
www.legrand.com